



designwerk

# Forma



Model: Forma 3-sofa  
Cover: leather Eagle M2103 Sand

FORMA

# Details



Contrast thread  
as an eye-catcher



Harmonious and  
clear design

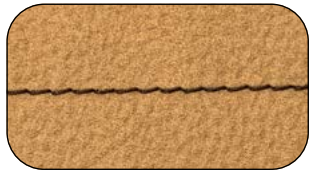


Delicate metal base

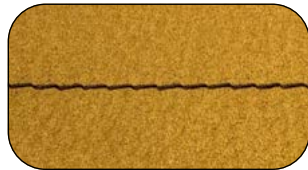
– Cultivated charm: When elegance, comfort and luxury come together, you have the Forma. A sofa that meets the latest standards and is of the highest quality. The Forma is the elegant and timeless centrepiece of any design-savvy living room. With unadulterated simplicity and high standards when it come to aesthetics, the Forma stands for timeless cosiness and warmth despite its cubist contours. The traditional art of sewing creates the elegant character of this style-conscious design star on the highest quality fabrics. The Forma is all about seduction and serenity.–

FORMA

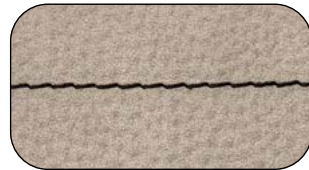
# Contrast stitching



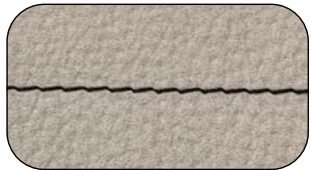
Contrast stitching: Brown



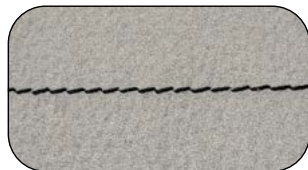
Contrast stitching: Brown



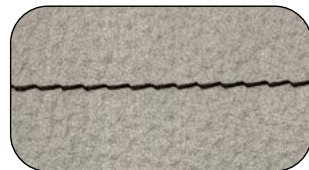
Contrast stitching: Black



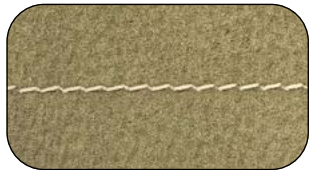
Contrast stitching: Black



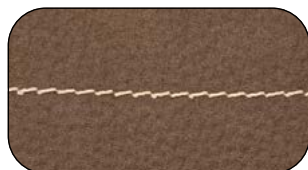
Contrast stitching: Black



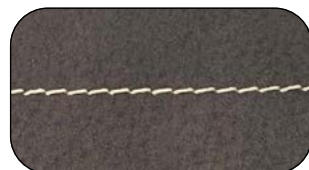
Contrast stitching: Black



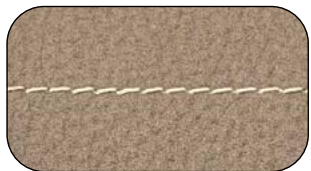
Contrast stitching: Beige



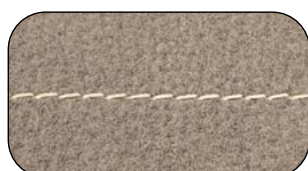
Contrast stitching: Beige



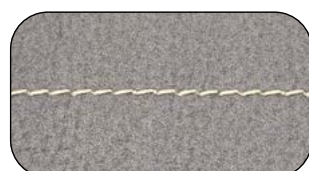
Contrast stitching: Beige



Contrast stitching: Beige



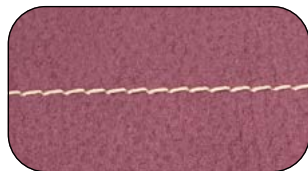
Contrast stitching: Beige



Contrast stitching: Beige



Contrast stitching: Beige



Contrast stitching: Beige



Contrast stitching: Beige

– As you may imagine when you hear the term “contrast stitching”, a dark thread is used on lighter leather and fabric upholstery, whereas a lighter thread is used on darker leather and fabric upholstery. On the left-hand side, you will find some examples. –

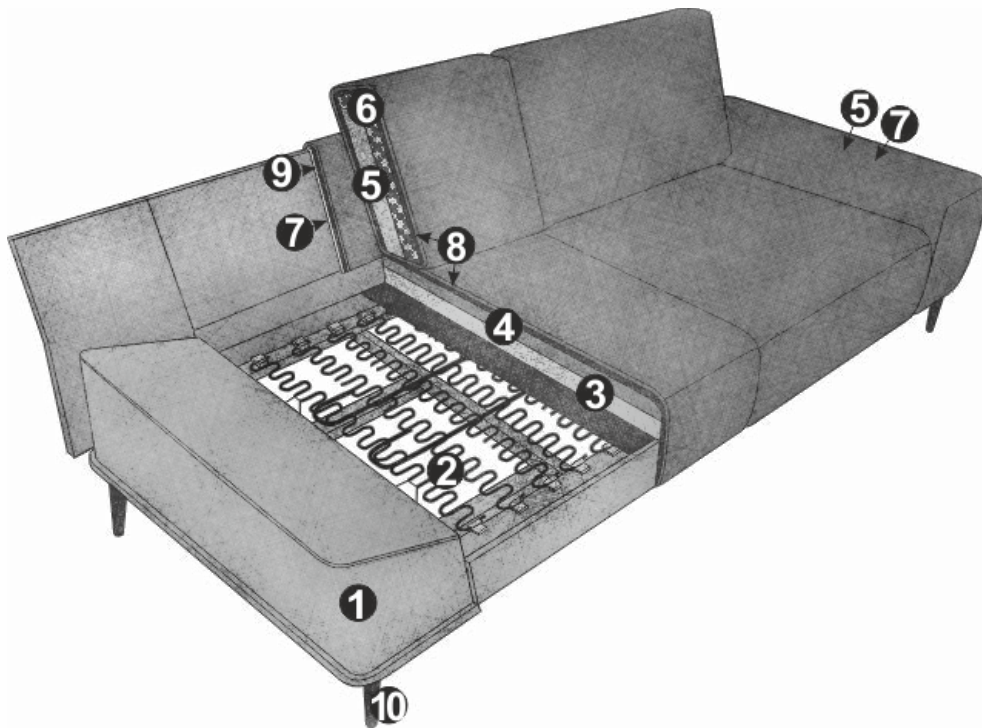
Contrast stitching colour per cover:



The colours shown above are not binding.

FORMA

# Technical data



- 01** Frame: beech and plywood construction
- 02** Seat suspension: permanently elastic Nosag steel wave springs with felt cover
- 03** Upholstery structure seat: highly elastic cold foam (density 35 kg/m<sup>3</sup>)
- 04** Upholstery structure seat: memory foam (density 45 kg/m<sup>3</sup>)
- 05** Upholstery structure back and armrest: soft foam (density 20 kg/m<sup>3</sup>)
- 06** Upholstery structure back: chamber cushion with a filling of silicone fibres
- 07** Upholstery structure back and armrest: standard comfort foam (density 25kg/m<sup>3</sup>)
- 08** Upholstery structure back and seat: upholstery wadding 200g
- 09** Upholstery structure back: upholstery wadding 130g
- 10** Foot: metal design base | matt black or chrome | height: 17 cm

## Good to know:

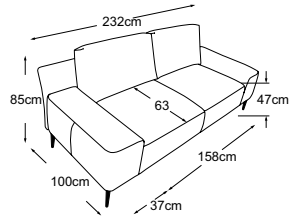
- available in fabric and leather (single colour); with contrasting thread
- FSC® certified (FSC®-C112933)
- optional accessories: headrest, kidney cushions, throw cushions

# FORMA

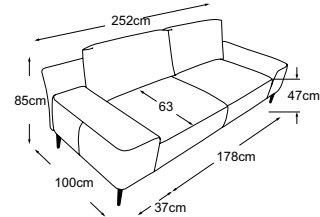
## Type plan



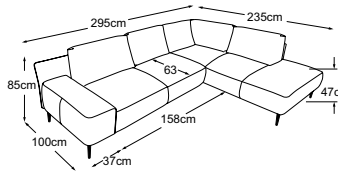
Decorative cushions are available in a wealth of designs and upholstery options.  
Find out more at [www.designwerk.li](http://www.designwerk.li)



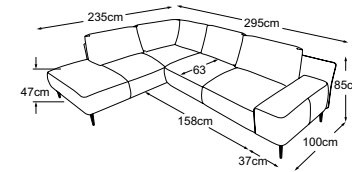
**2.5-sofa**  
Item number: D012250



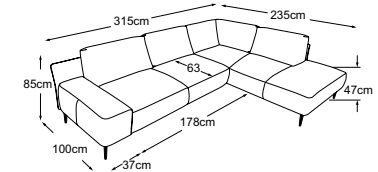
**3-sofa**  
Item number: D012300



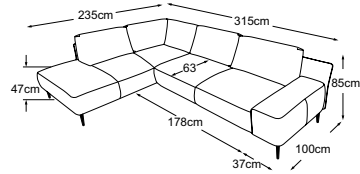
**2.5-OTM**  
Item number: D012762



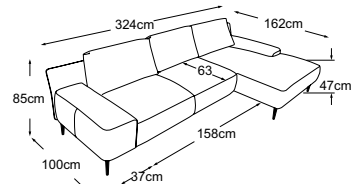
**OTM-2.5**  
Item number: D012763



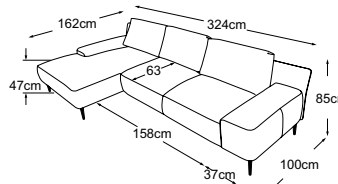
**3-OTM**  
Item number: D012562



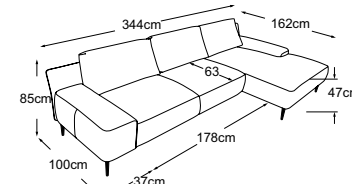
**OTM-3**  
Item number: D012563



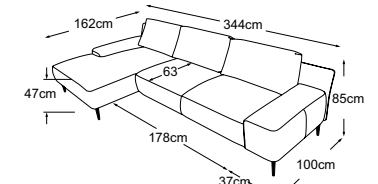
**2.5-REC**  
Item number: D012570



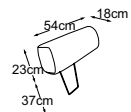
**REC-2.5**  
Item number: D012571



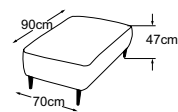
**3-REC**  
Item number: D012690



**REC-3**  
Item number: D012691



**Headrest**  
Item number: D012797



**Stool**  
Item number: D012800

Foot available in:



**B:** matt black      **C:** chrome

Please specify foot variant on order.

FORMA

# Impressions





[www.designwerk.li](http://www.designwerk.li)